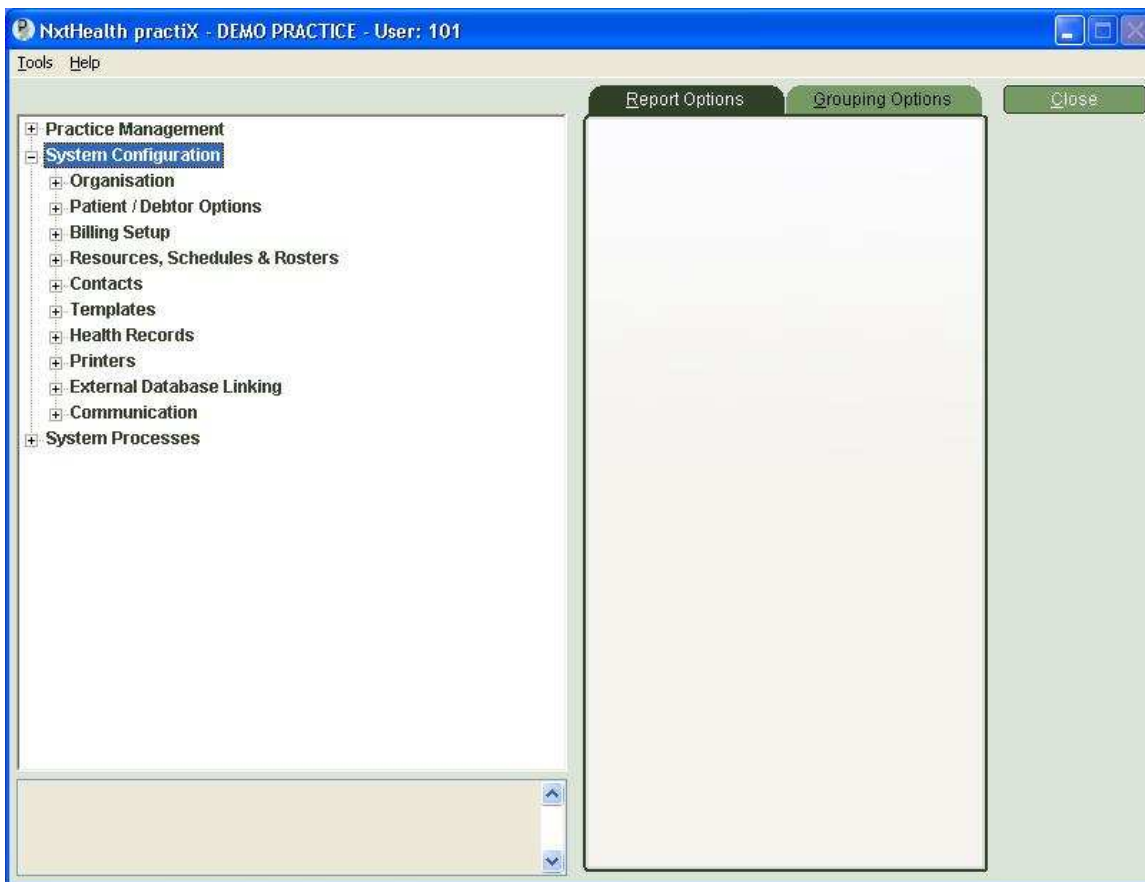


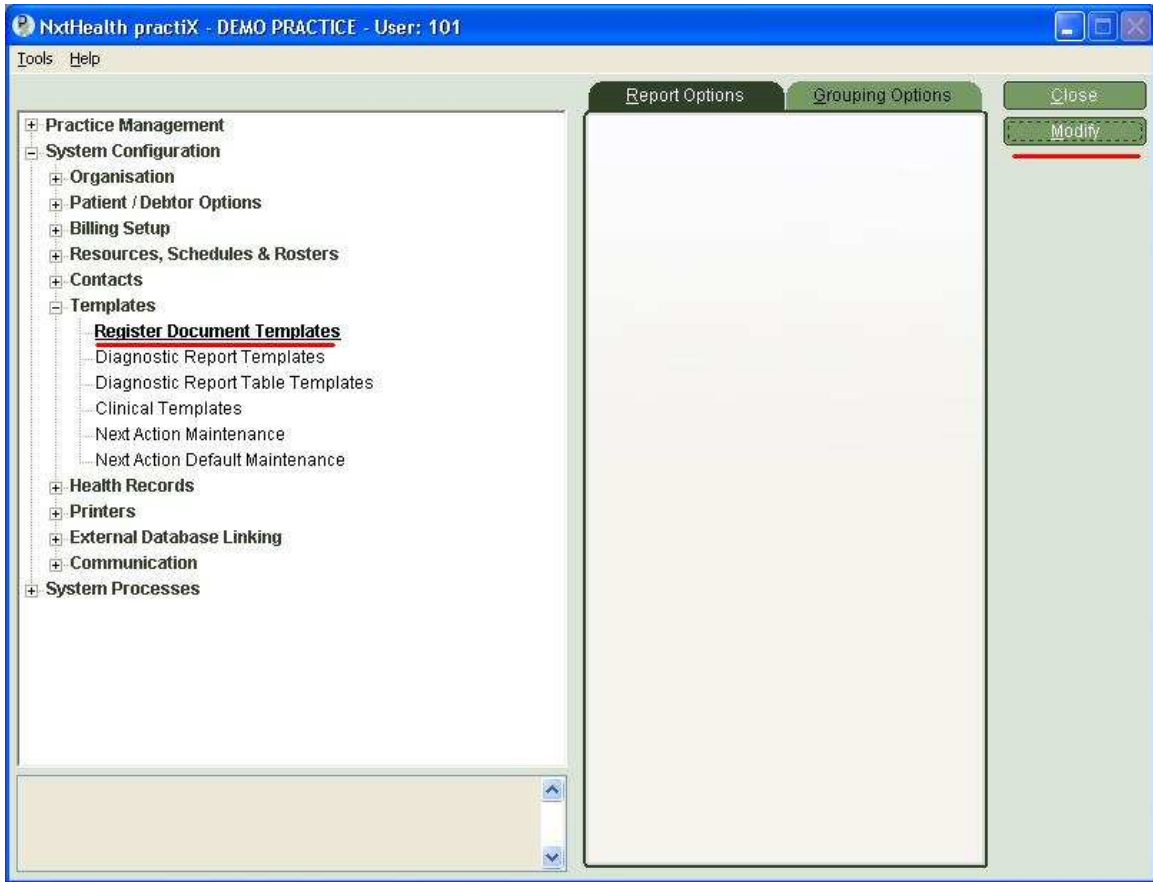
Templates in Practix

Templates are based on .dot Word templates in Classic and .doc Word documents in Practix /Plexus.

With a pre-existing template, to import the file, go to Administration on the Practix front screen, then System configuration, Templates:



Choose Register Document Templates:



Choose Template type from the dropdown, then click New. From here you can either select the file, or create a new file:

